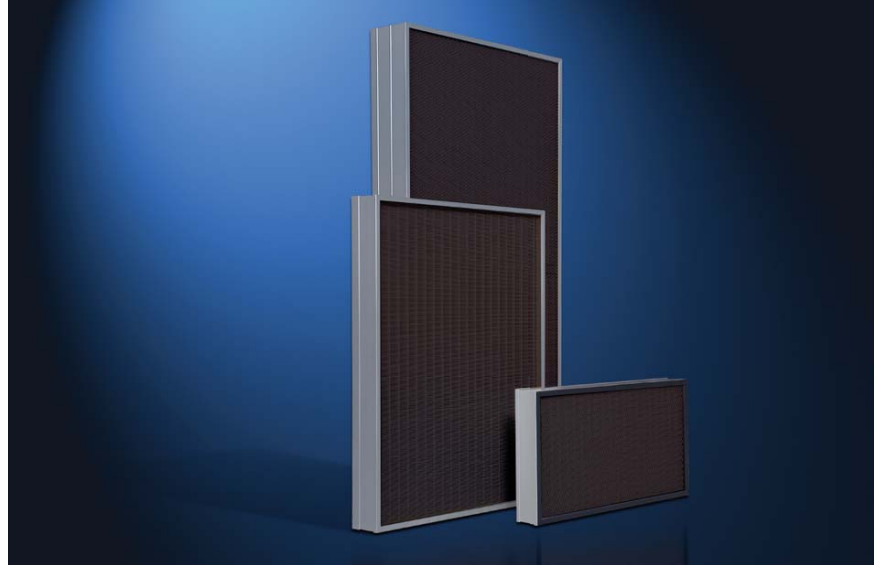




Panel Carbon Filter

Type CP



Overview

The CV Carbon Filter is designed to meet the strictest requirements in gas and odour filtration applications.

FEATURES & BENEFITS:

- Low initial pressure drop
- Durable ,especially against certain corrosive contaminants & acids, etc.
- Very rigid construction
- Ability to withstand air temperatures of up to 80° C
- Nonstandard sizes are available upon request

Design

The filter frame is made from an anodized extruded aluminium profile with two-angled corners producing a rigid straight filter.

Each different type of extruded aluminium profile has several built-in seal fasteners that anchor the profile in order to prevent any leakage between frame and media during the filter life.

All types of CP filters are available with two screens and EPDM gaskets.



Finedust - HEPA / ULPA

FILT AIR Ltd.

- Fine Dust Filter
- Final Filter for Fan Filter Units
- Final Filter for Clean Rooms
- Final Filter for Channel Installation
- Highly Active Filter Surface - Low Pressure Drop
- Final Filter for Grid Systems

Technical Data

Carbon Filter data		OS	K47	K43
Rated Face Velocity	m/s	0.5	0.5	0.5
Profile thickness	mm	70/78	70/78	70/78
Initial pressure drop @ rated airflow	Pa	110	110	110
Recommended final pressure drop*	Pa	600	600	600
Flammability classification to DIN 53438		K1/F1	K1/F1	K1/F1
Max. relative humidity	%	90	90	90
Max. continuous temperature	°C	80	80	80

* Or after full capacity of capturing substances

FEATURES

- Low initial pressure drop
- Durable ,especially against certain corrosive contaminants & acids, etc.
- Very rigid construction
- Ability to withstand air temperatures of up to 80° C
- Nonstandard sizes can be manufactured

Filter Sizes

Filter Size		Filter Rated Airflow Velocity of 0.5 m/s		
	305 x 305	mm	170	m ³ /h
	305 x 610	mm	335	m ³ /h
	610 x 610	mm	670	m ³ /h
	1220 x 610	mm	1340	m ³ /h

Specifications are subject to change without prior notice

Absorption Levels	Type K47	Type K43	Type OS
Acetone	A	A	A
Acetylene	A	A	A
Alcohol	A	A	A
Amines	A	A	A
Ammonia	C	D	D
Animal odours	A	A	A
Butane	C	C	C
Carbon dioxide	B	B	C
Corrosive Gases	A	A	A
Dimethyl sulphide	A	A	A
Ethylene oxide	A	A	A
Fumes	A	A	A
Hydrogen Sulfide	A	B	C
Hydrogen chloride	A	B	C
Industrial waste	A	A	A
Isoprene	A	A	A
Methyl acetate	B	C	C
Methyl formate	B	C	C
Nitric acid	A	B	C
Nitroxgen dioxide	A	A	B
Pentane	A	A	B
Sulphuric Acid	B	A	B
Sulphuric dioxide	B	A	B

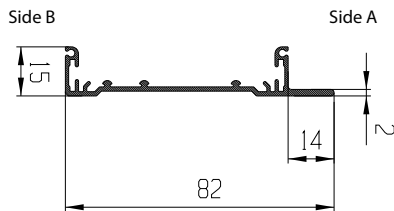
A = Very Good / B = Good / C = Moderate / D = Poor
There are more substances which can be absorbed and not listed above

Order code

Dimensional sketch of profiles

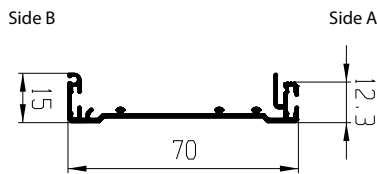
Application

K



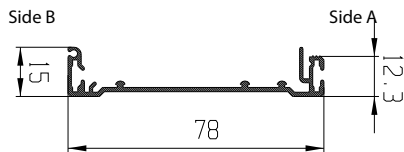
Special profile with 'knife edge' (suitable for 'fluid seal' system) for GP filters with Media Pack Order Code 4

M



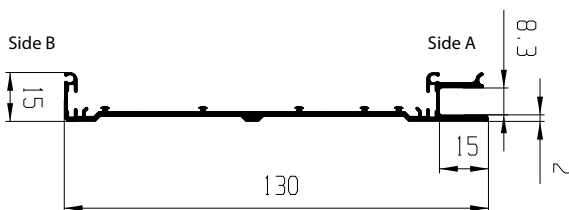
Standard profile for GP filters with Media Pack Order Code 4

N



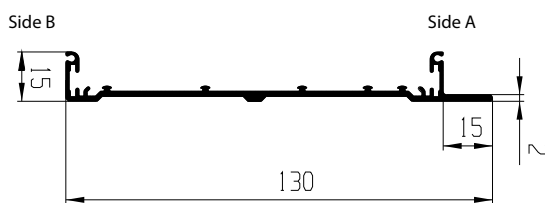
Standard profile for GP filters with Media Pack Order Code 4 or 5

Y



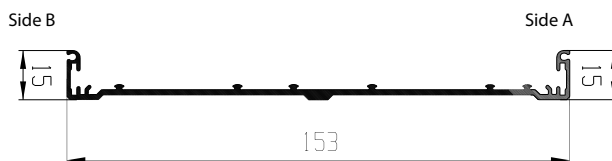
Special profile with 'fluid seal' (suitable for 'knife edge' system) for GP filters with Media Pack Order Code 4, 5, 7, or 9

X



Special profile with 'knife edge' (suitable for 'fluid seal' system) for GP filters with Media Pack Order Code 4, 5, 7, or 9

Z



Standard profile for GP filters with Media Pack Order Code 4, 5, 7, or 9

APPLICABLE STANDARDS:

- EN 1822-5
- IEST-RP-CC001.3
- EN 779
- ASHRAE 52.1
- ISO 9001:2008

Order Numbers

Order no.	CP	A	-	B	C	-	D	E	F	G
Example	CP	4	-	01	66	-	N	G	C	0

Carbon Pack	A	Type of Carbon	0S	Size L x W	C	Frame	D	Construction	E	Screen Material	F	Seal	G
47 mm	4	K 47	01	305 x 305 mm	33	70 mm (S-1)	M	2x Screen	G	Exp. Steel/ Powder Coated	C	No Seal	1
60 mm	5			305 x 610 mm	36	78 mm (S-1)	N					1x Dry, Side A	A
100 mm	7	K 43	02	457 x 305 mm	43	130 mm (K15-1)	X			Exp. Stainless Steel	U	1x Dry, Side B	B
140 mm	9			457 x 457 mm	44	130 mm (U15-1)	Y					Both Side, Dry	C
				457 x 610 mm	46	153 mm (S-1)	Z					1x Fluid, Side A	D
				610 x 610 mm	66							1x Fluid, Side A 1x Dry, Side B	F
				762 x 610 mm	76								
				915 x 610 mm	96								
				1220 x 610 mm	06								
				Other dimensions available upon request									

Specifications are subject to change without prior notice

HEPA & ULPA Filters for Industrial Clean Rooms

FILT AIR Ltd. specializes in the use of advanced technologies to implement a purified air supply for high-tech industry clean rooms, the microelectronics business sectors, and pharmaceutical industries. FILT AIR Ltd. has a broad range of client groups, such as hospitals, industrial plants, commercial buildings, and companies requiring clean air inside gas turbines.

FILT AIR Ltd.'s range of products is designed and produced in order to achieve the highest possible quality and offers safety and reliability with optimum prices and product availability. Since 2001, FILT AIR Ltd. has been registered and certified for Quality Management according to ISO 9001 (Registration No: IQNet: IL-24203).

FILT AIR Ltd.

Member of the Beth-El Group

Main Office: P.O. Box 166
Zikhron Yaaqov, 3095101, Israel
Tel: + 972-4-610 7777
Fax: + 972-4-635 0396
info@filt-air.com
www.filt-air.com