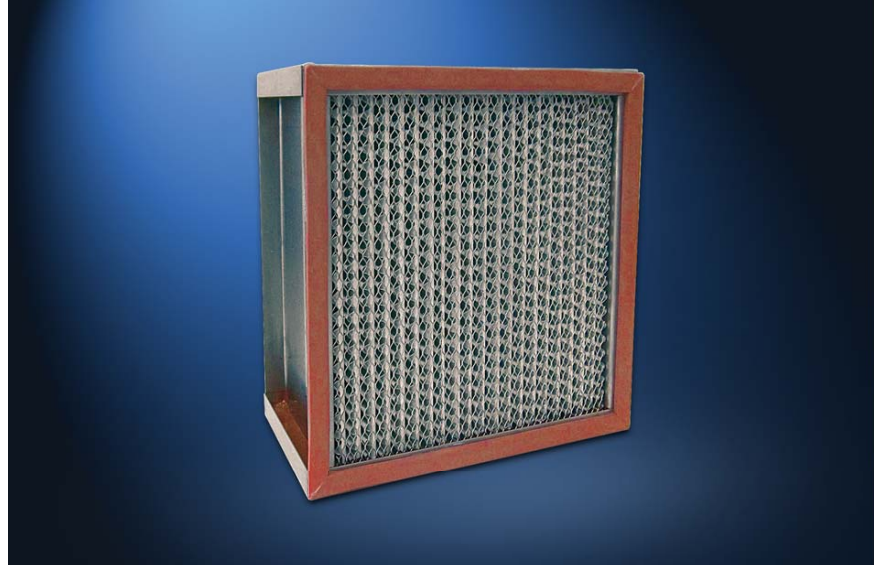




# High Temperature Filter

## Type GH



### Design & Construction

The GH High Temperature Filter provides protection for clean processes at high temperatures. The filter is made from rigid metal or stainless steel with a special high temperature resistant gasket. The media is glass fibre and the separators are fabricated from aluminium.

The filter efficiency is according to EN 1822: H13 and rated at  $\geq 99.97\%$  at  $0.3\mu\text{m}$ ,  $\geq 99.95\%$  at MPPS, measured at  $20^\circ\text{C}$  with DEHS. The recommended final pressure drop is 500 Pa and the temperature / humidity is  $250^\circ\text{C} / 100\% \text{ RH}$ .

Remarks: Please note the installation and assembly instructions!

#### FEATURES:

- $\geq 99.95\%$  at MPPS with DEHS
- Temperature resistant up to  $250^\circ\text{C}$
- Constant efficiency
- High mechanical strength
- High air flow



**Finedust - HEPA / ULPA**

#### **FILT AIR Ltd.**

- Fine Dust Filter
- Final Filter for Fan Filter Units
- Final Filter for Clean Rooms
- Final Filter for Channel Installation
- Highly Active Filter Surface - Low Pressure Drop
- Final Filter for Grid Systems

| Filter Data |        |       |              |                            |                  |                     |                       |           |
|-------------|--------|-------|--------------|----------------------------|------------------|---------------------|-----------------------|-----------|
| Width       | Height | Depth | Filter class | Air flow m <sup>3</sup> /h | Pressure drop Pa | Area m <sup>2</sup> | Volume m <sup>3</sup> | Weight kg |
| 203         | 203    | 78    | H13          | 50                         | 250              | 0.5                 | 0.006                 | 2.5       |
| 203         | 203    | 150   | H13          | 90                         | 250              | 0.6                 | 0.019                 | 3.1       |
| 305         | 305    | 150   | H13          | 250                        | 250              | 2.4                 | 0.019                 | 4         |
| 305         | 305    | 292   | H13          | 410                        | 250              | 5.1                 | 0.03                  | 5.1       |
| 305         | 610    | 150   | H13          | 540                        | 250              | 5.1                 | 0.035                 | 6         |
| 305         | 610    | 292   | H13          | 900                        | 250              | 10.4                | 0.063                 | 9.3       |
| 457         | 457    | 150   | H13          | 610                        | 250              | 5.9                 | 0.072                 | 7.3       |
| 457         | 457    | 292   | H13          | 1030                       | 250              | 12.8                | 0.128                 | 10.5      |
| 610         | 610    | 150   | H13          | 1180                       | 250              | 10.9                | 0.072                 | 9.5       |
| 610         | 610    | 292   | H13          | 1960                       | 250              | 22.5                | 0.128                 | 16.5      |
| 610         | 457    | 150   | H13          | 860                        | 250              | 8.2                 | 0.072                 | 8.4       |
| 457         | 610    | 292   | H13          | 1420                       | 250              | 16.3                | 0.128                 | 13        |
| 762         | 610    | 150   | H13          | 1500                       | 250              | 13.7                | 0.1                   | 10.6      |
| 610         | 762    | 292   | H13          | 2500                       | 250              | 28.2                | 0.16                  | 21.5      |

## Order Numbers

|                  |           |          |   |           |   |           |          |          |          |          |
|------------------|-----------|----------|---|-----------|---|-----------|----------|----------|----------|----------|
| <b>Order no.</b> | <b>GH</b> | <b>A</b> | - | <b>B</b>  | - | <b>C</b>  | <b>D</b> | <b>E</b> | <b>F</b> | <b>G</b> |
| <b>Example</b>   | <b>GH</b> | <b>1</b> | - | <b>13</b> | - | <b>66</b> | <b>D</b> | <b>6</b> | <b>2</b> | <b>1</b> |

| Media Pack | A | Efficiency | A  | Size L x W                              | C  | Frame             | A | Frame Height                         | E | Screen                        | F | Seal        | G |
|------------|---|------------|----|---|----|-------------------|---|--------------------------------------|---|-------------------------------|---|-------------|---|
| 72 mm      | 1 | M6         | 06 | 305 x 305 mm                            | 33 | Stainless Steel   | F | 78 mm                                | 6 | No Screen                     | 0 | No Seal     | 0 |
| 135 mm     | 2 | F7         | 07 | 305 x 610 mm                            | 36 | Steel Zinc Coated | D | 150 mm                               | 7 | 1x Screen on Up Stream Side   | 1 | Down Stream | 1 |
| 280 mm     | 3 | F8         | 08 | 457 x 305 mm                            | 43 |                   |   | 292 mm                               | 8 | 1x Screen on Down Stream Side | 2 | Up Stream   | 2 |
|            |   | F9         | 09 | 457 x 457 mm                            | 44 |                   |   |                                      |   | 2x Screen                     | 3 | Both Sides  | 3 |
|            |   | E10        | 10 | 457 x 610 mm                            | 46 |                   |   |                                      |   |                               |   |             |   |
|            |   | H13        | 13 | 610 x 610 mm                            | 66 |                   |   |                                      |   |                               |   |             |   |
|            |   | H14        | 14 | 762x610 mm                              | 76 |                   |   |                                      |   |                               |   |             |   |
|            |   |            |    | 915x610 mm                              | 96 |                   |   |                                      |   |                               |   |             |   |
|            |   |            |    | Other dimensions available upon request |    |                   |   | Other heights available upon request |   |                               |   |             |   |

Specifications are subject to change without prior notice  
The frame height should be at least 20 mm higher than the media pack height

## HEPA & ULPA Filters for Industrial Clean Rooms

FILT AIR Ltd. specializes in the use of advanced technologies to implement a purified air supply for high-tech industry clean rooms, the microelectronics business sectors, and pharmaceutical industries. FILT AIR Ltd. has a broad range of client groups, such as hospitals, industrial plants, commercial buildings, and companies requiring clean air inside gas turbines.

FILT AIR's range of products is designed and produced in order to achieve the highest possible quality and offers safety and reliability with optimum prices and product availability. Since 2001, FILT AIR Ltd. has been registered and certified for Quality Management according to ISO 9001 (Registration No: IQNet: IL-24203).

### FILT AIR Ltd.

Member of the Beth-El Group

Main Office: P.O. Box 166  
Zikhron Yaaqov, 3095101, Israel

Tel: + 972-4-610 7777

Fax: + 972-4-635 0396

info@filt-air.com

www.filt-air.com